

# Encino - Tarzana Community Plan

## General Plan Land Use / Corresponding Zones

- Minimum Residential / OS,A1,A2,RE40
- Very Low I Residential / RE20,RA
- Very Low II Residential / RE15, R11
- Low I Residential / RE9
- Low II Residential / R1, RS, RD6
- Low Medium I Residential / R2,RD3,RD4,RZ3,RZ4,RU,RW1
- Low Medium II Residential / RD1.5,RD2,RW2,RZ2.5
- Medium Residential / R3
- Neighborhood Commercial / C1,C1.5,C2,C4,RAS3
- General Commercial / C1.5,C2,CR,RAS3
- Community Commercial / CR,C4,RAS3
- Regional Center Commercial / C4,C2,RAS3
- Commercial Manufacturing / CM
- Limited Manufacturing / CM,MR1,M1
- Open Space / OS,A1
- Public Facilities / PF
- Public Facilities - Freeways

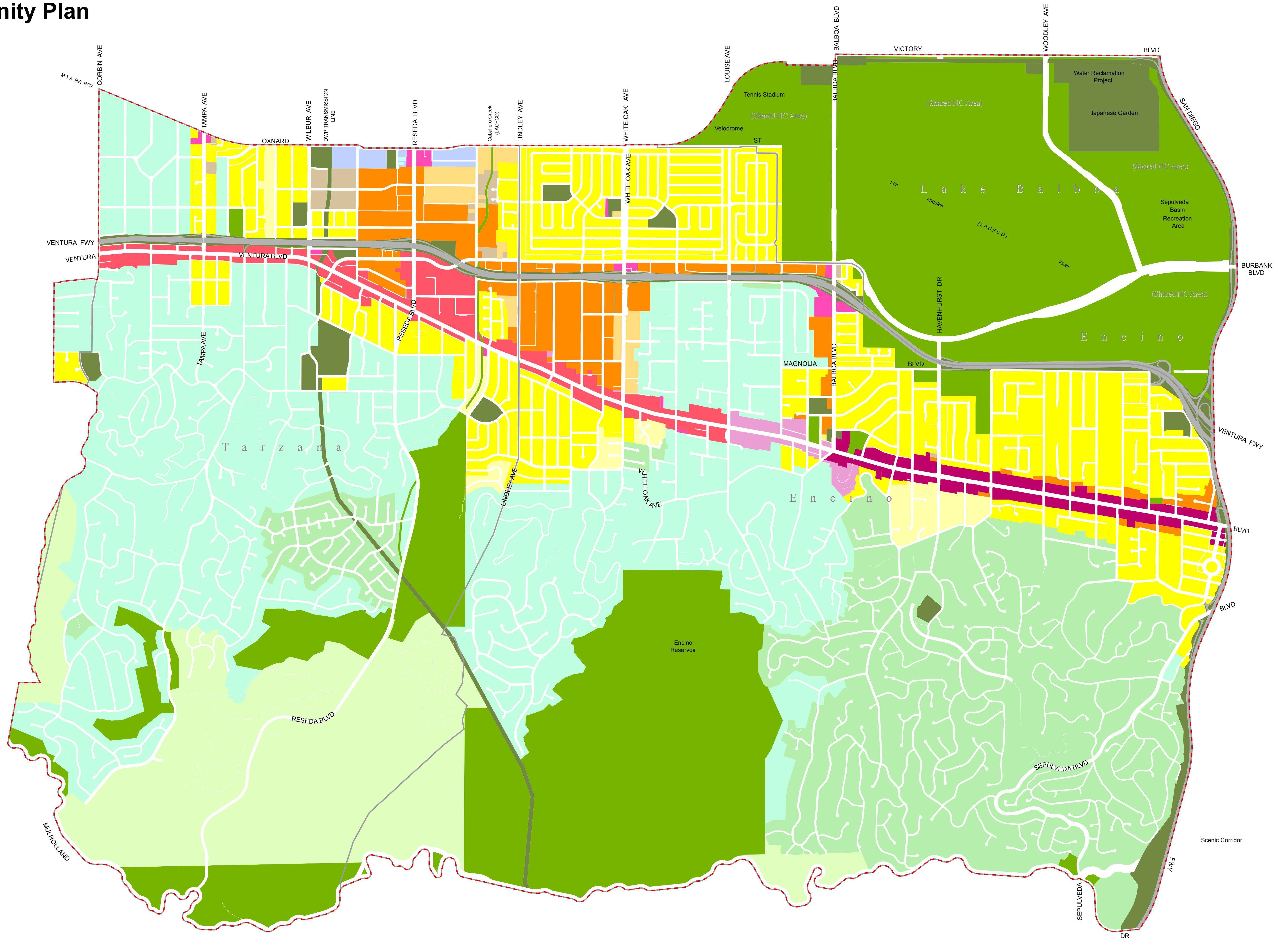
## Community Plan Boundary



## Neighborhood Council



Scenic Corridor



**Disclaimer:**  
 The City of Los Angeles is neither responsible nor liable for any inaccuracies, errors or omissions with respect to the material contained on this map. This map and all materials contained on it are distributed and transmitted "as is" without warranties of any kind, either express or implied, including without limitations, warranties of title or implied warranties of merchantability or fitness for a particular purpose. The City of Los Angeles is not responsible for any special, indirect, incidental, or consequential damages that may arise from the use of, or the inability to use, the map and/or the materials contained on the map whether the materials contained on the map are provided by the City of Los Angeles, or a third party.

Source: © 2017 Department of City Planning - Information Technology; © 2017 Bureau of Engineering;  
 © 2017 Department of Neighborhood Empowerment

Date: 4/18/2017

