

# Mosquito Threats in Encino

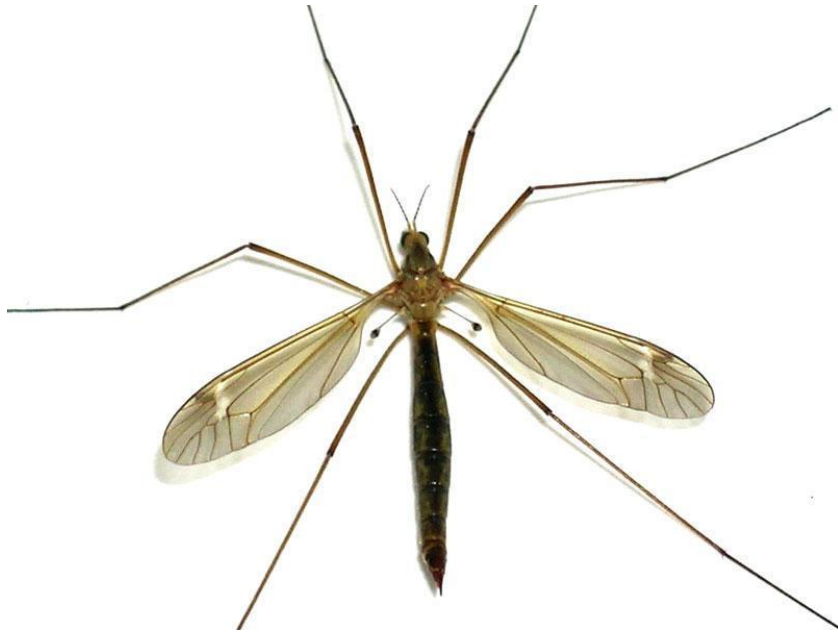
## West Nile Virus and Zika



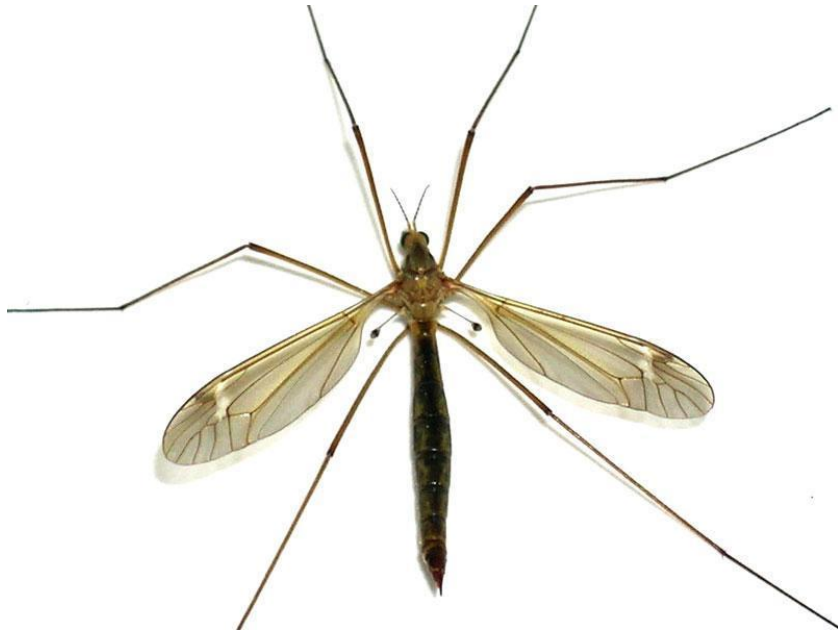
**Presented by  
Levy Sun, Public Information Officer**



# But First...



# But First...



Harmless

**Crane Fly**

**\*Does not bite\***

Dangerous

**Mosquito**

**\*Yes, they bite\***



# Why Encino?

## High Risk Areas in Greater Los Angeles County Vector Control District 2017



## Top Communities

### Higher than average WNV activity + increased *Aedes* threat

- La Mirada
- San Fernando
- Santa Fe Springs
- South El Monte
- Valley Village
- Whittier

*Tier 1*

### Higher than average WNV activity

- Burbank
- Canoga Park
- Cerritos
- Encino
- Lakewood
- Mission Hills
- North Hills
- North Hollywood
- Northridge
- Panorama City
- Porter Ranch
- Sherman Oaks
- Studio City
- Van Nuys

*Tier 2*

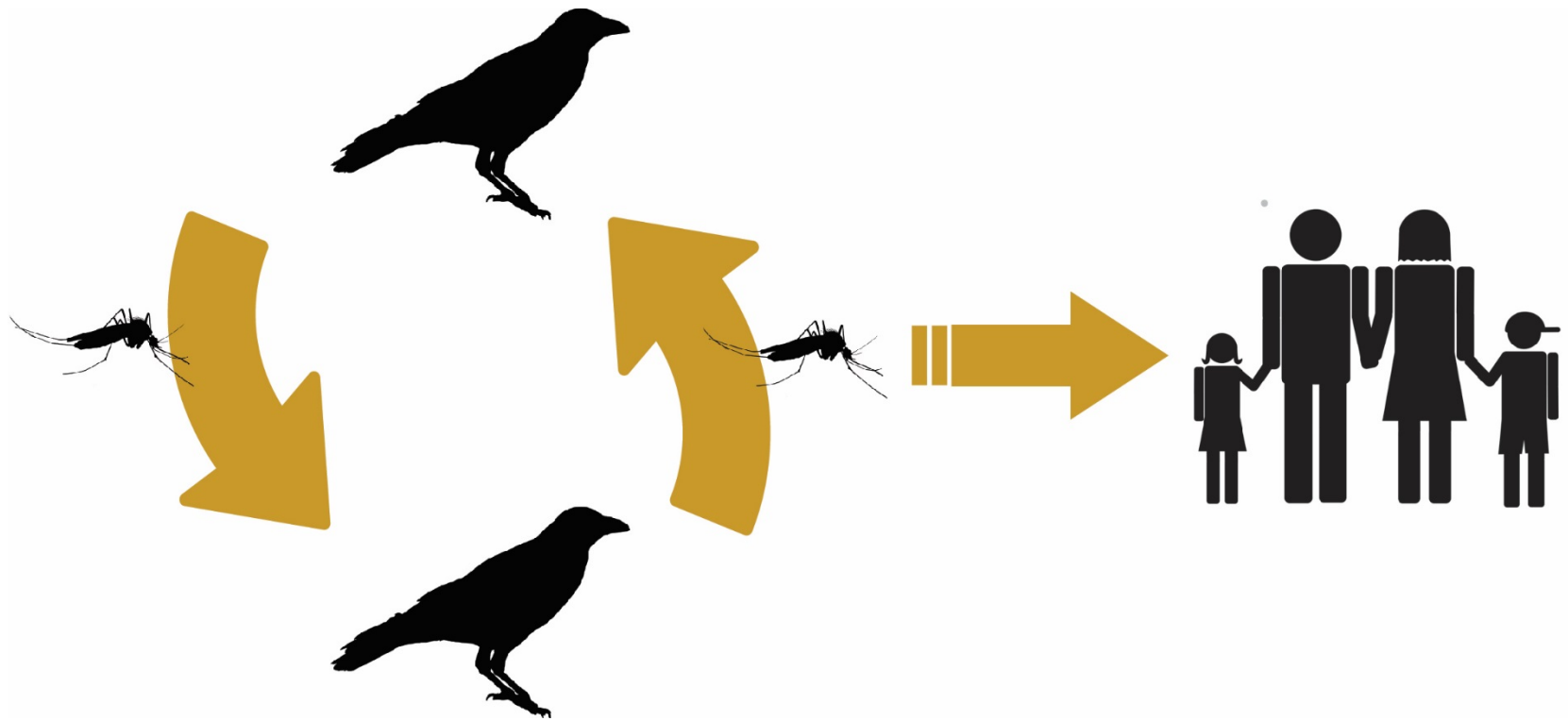
### Other Cities/Communities in GLACVCD will follow standard outreach strategy

Strategy to prioritize communities will be adjusted depending on viral activity, mosquito populations, and other environmental factors.



# West Nile Virus Transmission Cycle

Transmitted by native *Culex* mosquitoes





# West Nile Virus Symptoms



1 in 5 will show symptoms

Flu-like symptoms

- **Body rash**
- **Fever**
- **Body aches**

1 in 150 people require hospitalization

Can progress:

- Coma
- Paralysis



# West Nile Virus

It is Endemic: *Here to stay*

- **Greatest Risk:** those over 65 years, and those with weakened immune systems.

*No vaccine, No cure*



# Invasive *Aedes* Mosquitoes



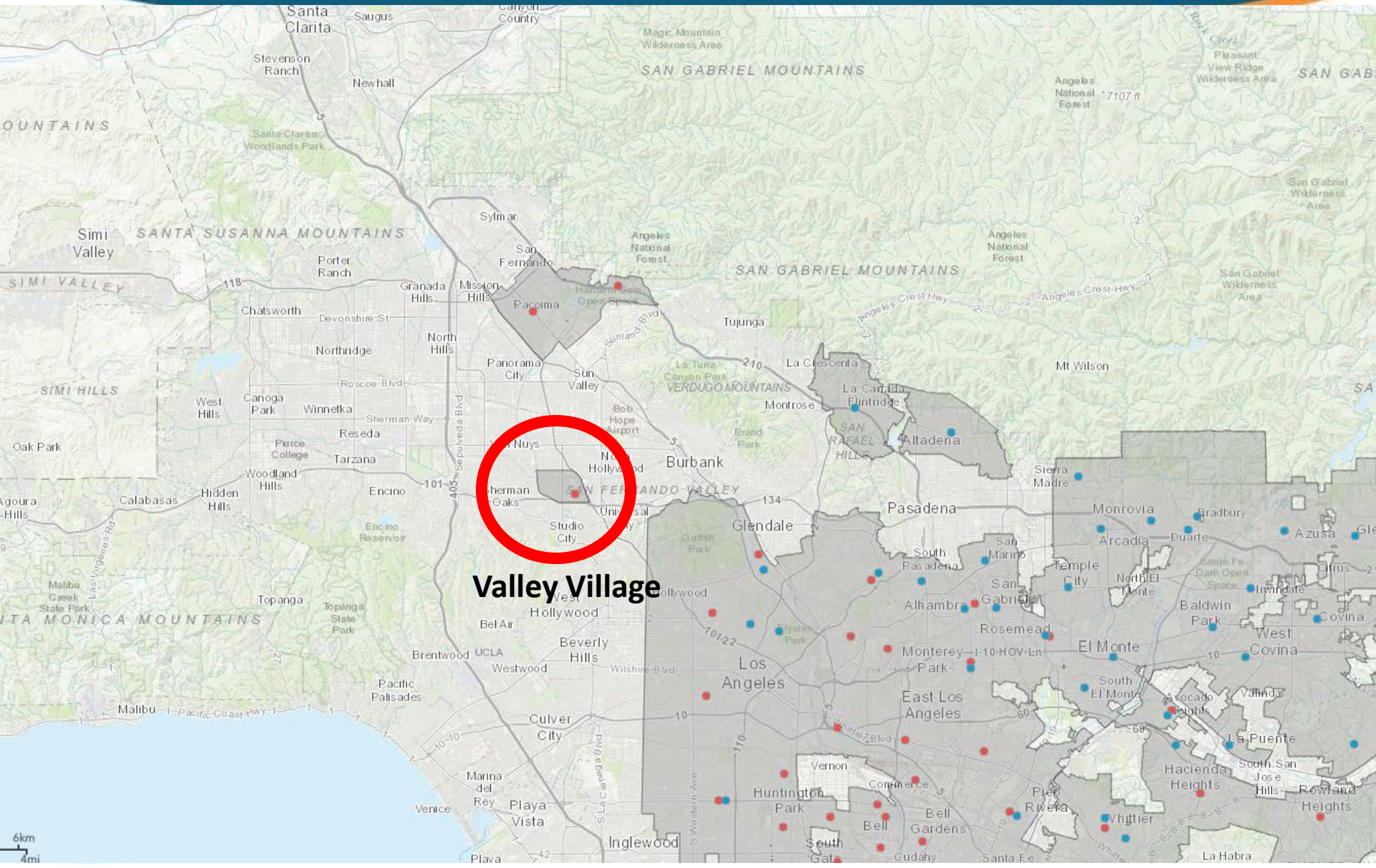


# Invasive *Aedes* Mosquitoes

They're about the  
same size as our  
native mosquitoes!

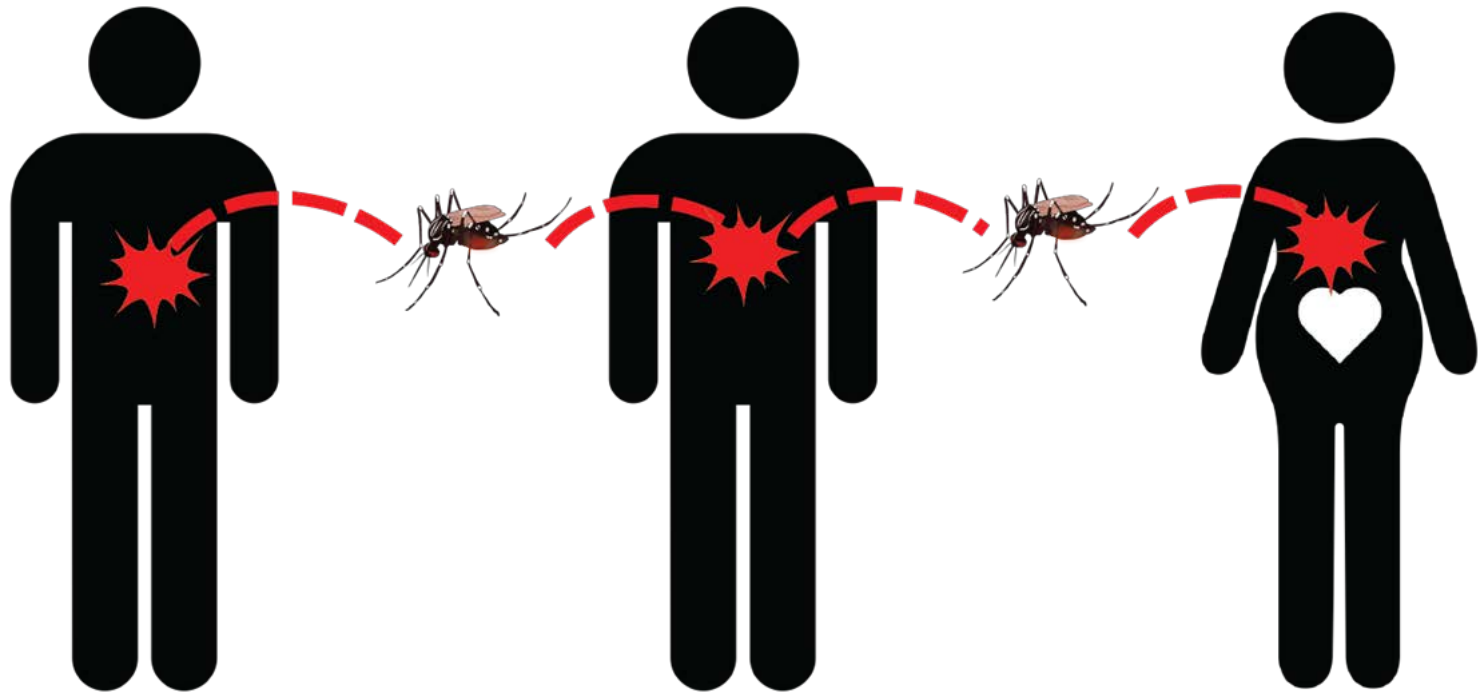


# Invasive Aedes Mosquitoes in LA County



# *Aedes* Mosquitoes Transmit Zika Virus – What is the risk?

No confirmation of local outbreak, BUT the mosquitoes are here.



Zika can also be sexually transmitted





# Invasive *Aedes* Mosquitoes

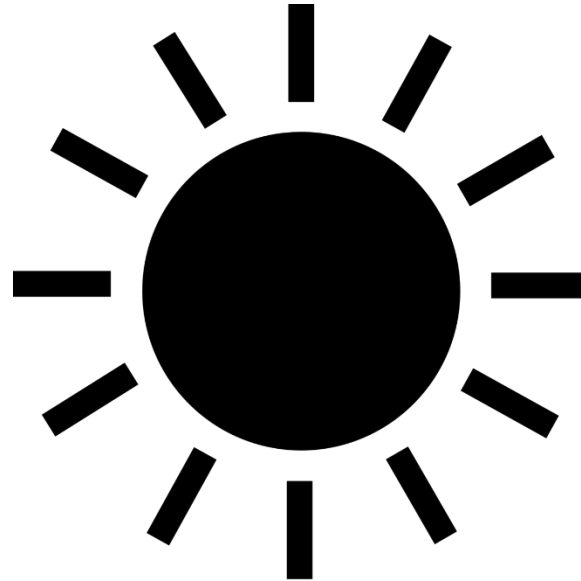
**3** things to know

about these  
black-and-white  
striped mosquitoes



# Invasive *Aedes* Mosquitoes

## 1. Biting Behavior



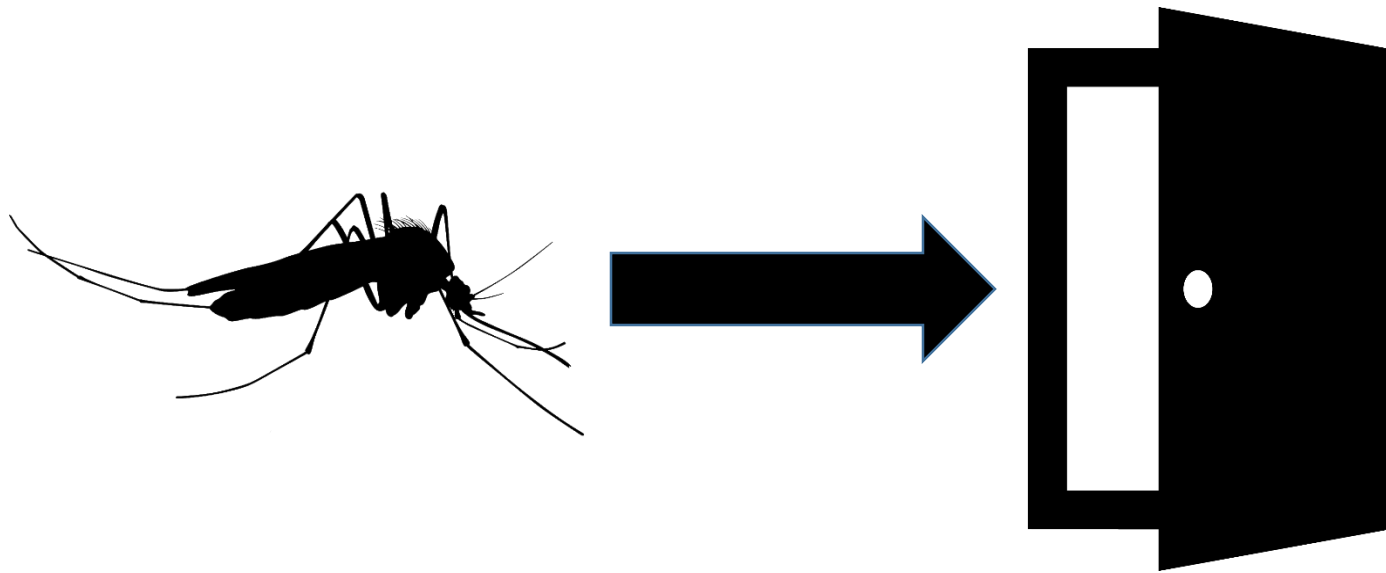
**They bite aggressively  
during the day**





# Invasive *Aedes* Mosquitoes

## 2. They WILL enter buildings/homes



# Invasive *Aedes* Mosquitoes

## 3. Egg Laying Behavior



**Individual** mosquito eggs laid on plant stems or sides of containers



Complete life cycle in 7 days!





*Aedes* mosquito eggs stay  
alive for many years



# West Nile Virus, Zika, annoying mosquitoes... What Can We Do, Anyway?



**No Need to Hide.**





# Don't Let Mosquitoes Live Around Your Home





# Don't Let Mosquitoes Live Around Your Home





# Don't Let Mosquitoes Live Around Your Home





# Don't Let Mosquitoes Live Around Your Home



Greater Los Angeles County Vector Control District | 562-944-9656 | [glacvcd.org](http://glacvcd.org)





# Don't Let Mosquitoes Live Around Your Home





# Don't Let Mosquitoes Live Around Your Home





# Don't Let Mosquitoes Live Around Your Home





# Don't Let Mosquitoes Live Around Your Home



# What We're Doing: *Integrated Vector Management (IVM)*

## Disease Surveillance

- Set mosquito traps
  - Mosquito populations
  - Disease transmission

## Mosquito Management

- Inspections & service requests
- Source reduction / elimination
- Treatments

## Outreach & Education

- Community events
- Elementary education





# Effective Repellent



Effective and long-lasting repellent contains one of the following proven EPA-registered active ingredients

**DEET**

**IR3535**

**OIL OF LEMON  
EUCALYPTUS**

**PICARIDIN**

In addition, choose repellents based on these factors:

- Length of time you need protection
- % active ingredient as listed on product label

**Always read and follow label directions  
when applying repellent.**



# CONTACT

**Greater Los Angeles County Vector Control District**  
Sylmar, CA | Santa Fe Springs, CA

**INSPECTIONS & ASSISTANCE  
AT NO EXTRA CHARGE:**

**562-818-364-9589**

**[www.ReportMosquitoes.org](http://www.ReportMosquitoes.org)**

**Levy Sun - LSUN@GLACVCD.ORG**  
**Public Information Officer**

